

# SNAP RESISTANT ASTRAL CYLINDERS



## MAIN FEATURES

### ACTIVE SECURITY

- **Number of key-differs:** over 1,600,000

### PASSIVE SECURITY

- **Tearing Resistance - Snap Resistant**
  - Core made of 6 rigid segments (greater breaking strength) and 1 flexible segment (greater flexibility). Segments pack extends through the entire length of the cylinder. It is visible at both ends, even when the cylinder is installed in the door.
- **Push resistance:** projecting cam.
- **Drill resistance:**
  - one hardened steel inserts into both sides of the cylinder body.
  - hardened steel pin and driver in first position.
- **Picking resistance:** special shape of the drivers.

### KEY ARRANGEMENTS CAPACITY

- 63,000 different cylinders per MK key (including passive pins capacity).
- Other configurations available on request.

### RELIABILITY

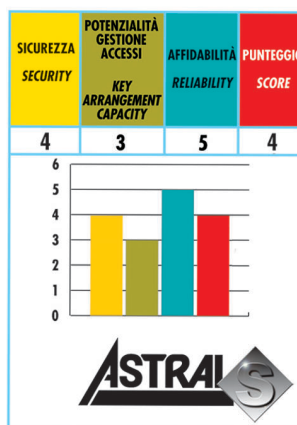
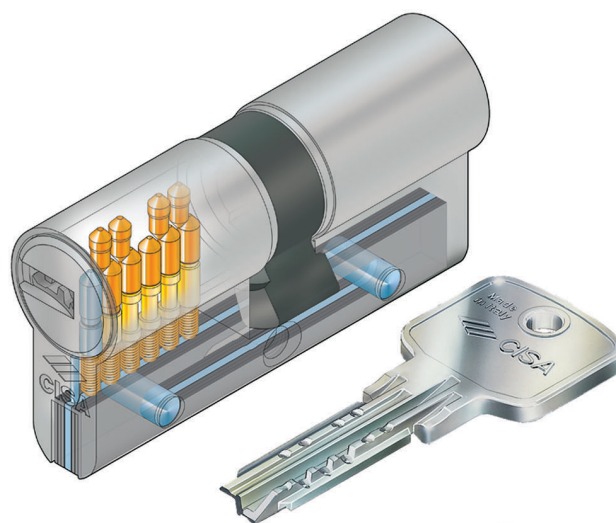
- 100,000 cycles

### NORMS

- Compliant with EN 1303 norms:
  - Durability: grade 6
  - Security: grade 3

### PATENTS

- Utility model: B02003U000006 (Snap Resistant features)



### Technical features:

#### CYLINDER:

- 10 pins (6 actives, 4 passive) key biting system
- brass body with segment pack extended through the entire length of the cylinder
- brass plugs
- self-lubricating sintered steel projecting DIN cam
- pins:
  - in wear resistant bronze
  - in hardened steel in first position
- drivers:
  - in brass
  - in hardened steel in first position
- phosphor bronze springs

#### KEY:

- flat reversible keys
- in a special brass alloy nickel plated
- numbered on key head
- 2,9 mm thickness
- 0,48 mm depth

#### Finishes:

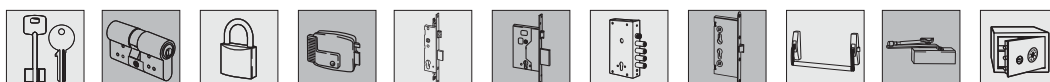
- Standard: sanded brass (fin. 00)
- On request:
  - polished brass (fin. 66)
  - nickel plated brass (fin. 12)

#### On request:

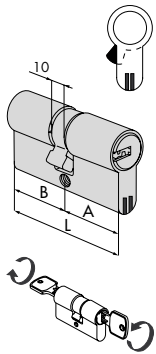
- KA, MK, GMK, GGMK, CE, CA, C5, CL, CP, (Key with long neck and plastic bow compatible with protective roses, CP with personalised plastic piece and profile), PP and relevant models

#### Supplied as standard:

- fixing screw
- 3 keys art 1.00620.01.0
- Use and maintenance instructions.
- CODE CARD
  - to make copies in conformity with the original. Simply enter the indirect code shown on the card into electronic key card machines.



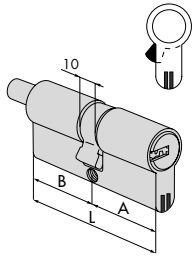
Type	Description	Key item				Unitweight Kg	Pieces	ITEM			
		L	A	B	Pins			Type	Dim.	Hard.	Fini.



• Clutching systems double cylinders

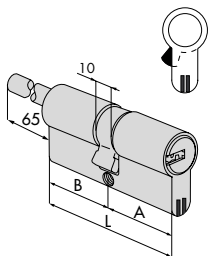
<b>30 / 30</b>	59,0	29,5	29,5	10	1 00620 01 0	0,235	12	1	<b>0A3S1 07 0</b>
<b>28 / 34</b>	61,2	27,7	33,5	10	1 00620 01 0	0,234	12	1	<b>0A3S1 06 0</b>
<b>28 / 36</b>	63,2	27,7	35,5	10	1 00620 01 0	0,240	12	1	<b>0A3S1 09 0</b>
<b>30 / 35</b>	64,0	29,5	34,5	10	1 00620 01 0	0,243	12	1	<b>0A3S1 26 0</b>
<b>33 / 33</b>	65,0	32,5	32,5	10	1 00620 01 0	0,258	12	1	<b>0A3S1 10 0</b>
<b>35 / 35</b>	69,0	34,5	34,5	10	1 00620 01 0	0,272	12	1	<b>0A3S1 13 0</b>
<b>40 / 30</b>	69,0	39,5	29,5	10	1 00620 01 0	0,272	12	1	<b>0A3S1 12 0</b>
<b>28 / 43</b>	70,2	27,7	42,5	10	1 00620 01 0	0,262	12	1	<b>0A3S1 11 0</b>
<b>30 / 45</b>	74,0	29,5	44,5	10	1 00620 01 0	0,274	12	1	<b>0A3S1 27 0</b>
<b>35 / 40</b>	74,0	34,5	39,5	10	1 00620 01 0	0,274	12	1	<b>0A3S1 28 0</b>
<b>30 / 50</b>	79,0	29,5	49,5	10	1 00620 01 0	0,301	12	1	<b>0A3S1 17 0</b>
<b>35 / 45</b>	79,0	34,5	44,5	10	1 00620 01 0	0,289	12	1	<b>0A3S1 19 0</b>
<b>40 / 40</b>	79,0	39,5	39,5	10	1 00620 01 0	0,289	12	1	<b>0A3S1 18 0</b>
<b>30 / 55</b>	84,0	29,5	54,5	10	1 00620 01 0	0,304	12	1	<b>0A3S1 33 0</b>
<b>35 / 50</b>	84,0	34,5	49,5	10	1 00620 01 0	0,360	12	1	<b>0A3S1 31 0</b>
<b>43 / 43</b>	85,0	42,5	42,5	10	1 00620 01 0	0,308	12	1	<b>0A3S1 46 0</b>
<b>30 / 60</b>	89,0	29,5	59,5	10	1 00620 01 0	0,320	12	1	<b>0A3S1 20 0</b>
<b>35 / 55</b>	89,0	34,5	54,5	10	1 00620 01 0	0,332	12	1	<b>0A3S1 32 0</b>
<b>40 / 50</b>	89,0	39,5	49,5	10	1 00620 01 0	0,320	12	1	<b>0A3S1 21 0</b>
<b>45 / 45</b>	89,0	44,5	44,5	10	1 00620 01 0	0,333	12	1	<b>0A3S1 29 0</b>
<b>30 / 65</b>	94,0	29,5	64,5	10	1 00620 01 0	0,334	6	1	<b>0A3S1 41 0</b>
<b>35 / 60</b>	94,0	34,5	59,5	10	1 00620 01 0	0,390	6	1	<b>0A3S1 38 0</b>
<b>40 / 55</b>	94,0	39,5	54,5	10	1 00620 01 0	0,355	6	1	<b>0A3S1 42 0</b>
<b>45 / 50</b>	94,0	44,5	49,5	10	1 00620 01 0	0,334	6	1	<b>0A3S1 39 0</b>
<b>30 / 70</b>	99,0	29,5	69,5	10	1 00620 01 0	0,349	6	1	<b>0A3S1 24 0</b>
<b>35 / 65</b>	99,0	34,5	64,5	10	1 00620 01 0	0,349	6	1	<b>0A3S1 22 0</b>
<b>40 / 60</b>	99,0	39,5	59,5	10	1 00620 01 0	0,349	6	1	<b>0A3S1 25 0</b>
<b>45 / 55</b>	99,0	44,5	54,5	10	1 00620 01 0	0,349	6	1	<b>0A3S1 43 0</b>
<b>50 / 50</b>	99,0	49,5	49,5	10	1 00620 01 0	0,349	6	1	<b>0A3S1 23 0</b>
<b>30 / 80</b>	109,0	29,5	79,5	10	1 00620 01 0	0,378	6	1	<b>0A3S1 37 0</b>
<b>40 / 70</b>	109,0	39,5	69,5	10	1 00620 01 0	0,400	6	1	<b>0A3S1 35 0</b>
<b>50 / 60</b>	109,0	49,5	59,5	10	1 00620 01 0	0,402	6	1	<b>0A3S1 36 0</b>
<b>55 / 55</b>	109,0	54,5	54,5	10	1 00620 01 0	0,378	6	1	<b>0A3S1 70 0</b>
<b>55 / 60</b>	114,0	54,5	59,5	10	1 00620 01 0	0,420	6	1	<b>0A3S1 71 0</b>
<b>60 / 60</b>	119,0	59,5	59,5	10	1 00620 01 0	0,410	6	1	<b>0A3S1 40 0</b>

Type	Description	Key item				Kg	Pcs	ITEM			
		L	A	B	pins			Type	Dim.	Hand	Fm.



- Double cylinders with thumb turn shaft
- ON REQUEST
- KNOBS:  
-item 1.06353.00  
-item 1.06354.00

30 / 30	59,0	29,5	29,5	10	1 00620 01 0	0,244	12	1	0A3S2	07 0
30 / 35	64,0	29,5	34,5	10	1 00620 01 0	0,264	12	1	0A3S2	26 0
35 / 30	64,0	34,5	29,5	10	1 00620 01 0	0,259	12	1	0A3S2	81 0
33 / 33	65,0	32,5	32,5	10	1 00620 01 0	0,267	12	1	0A3S2	10 0
30 / 40	69,0	29,5	39,5	10	1 00620 01 0	0,279	12	1	0A3S2	82 0
35 / 35	69,0	34,5	34,5	10	1 00620 01 0	0,279	12	1	0A3S2	13 0
40 / 30	69,0	39,5	29,5	10	1 00620 01 0	0,279	12	1	0A3S2	12 0
35 / 40	74,0	34,5	39,5	10	1 00620 01 0	0,294	12	1	0A3S2	28 0
40 / 35	74,0	39,5	34,5	10	1 00620 01 0	0,294	12	1	0A3S2	83 0
30 / 50	79,0	29,5	49,5	10	1 00620 01 0	0,318	6	1	0A3S2	17 0
35 / 45	79,0	34,5	44,5	10	1 00620 01 0	0,309	6	1	0A3S2	19 0
40 / 40	79,0	39,5	39,5	10	1 00620 01 0	0,309	6	1	0A3S2	18 0
45 / 35	79,0	44,5	34,5	10	1 00620 01 0	0,309	6	1	0A3S2	85 0
40 / 45	84,0	39,5	44,5	10	1 00620 01 0	0,324	6	1	0A3S2	30 0
45 / 40	84,0	44,5	39,5	10	1 00620 01 0	0,324	6	1	0A3S2	84 0
50 / 35	84,0	49,5	34,5	10	1 00620 01 0	0,324	6	1	0A3S2	94 0
43 / 43	85,0	42,5	42,5	10	1 00620 01 0	0,326	6	1	0A3S2	46 0
30 / 60	89,0	29,5	59,5	10	1 00620 01 0	0,353	6	1	0A3S2	20 0
40 / 50	89,0	39,5	49,5	10	1 00620 01 0	0,350	6	1	0A3S2	21 0
45 / 45	89,0	44,5	44,5	10	1 00620 01 0	0,347	6	1	0A3S2	29 0
40 / 55	94,0	39,5	54,5	10	1 00620 01 0	0,355	6	1	0A3S2	42 0
45 / 50	94,0	44,5	49,5	10	1 00620 01 0	0,367	6	1	0A3S2	39 0
40 / 60	99,0	39,5	59,5	10	1 00620 01 0	0,367	6	1	0A3S2	25 0
45 / 55	99,0	44,5	54,5	10	1 00620 01 0	0,370	6	1	0A3S2	43 0
50 / 50	99,0	49,5	49,5	10	1 00620 01 0	0,370	6	1	0A3S2	23 0
45 / 60	104,0	44,5	59,5	10	1 00620 01 0	0,398	6	1	0A3S2	54 0
55 / 50	104,0	54,5	49,5	10	1 00620 01 0	0,384	6	1	0A3S2	64 0
30 / 80	109,0	29,5	79,5	10	1 00620 01 0	0,400	6	1	0A3S2	37 0
40 / 70	109,0	39,5	69,5	10	1 00620 01 0	0,400	6	1	0A3S2	35 0
50 / 60	109,0	49,5	59,5	10	1 00620 01 0	0,400	6	1	0A3S2	36 0
55 / 55	109,0	54,5	54,5	10	1 00620 01 0	0,400	6	1	0A3S2	70 0
60 / 50	109,0	59,5	49,5	10	1 00620 01 0	0,410	6	1	0A3S2	89 0
55 / 60	114,0	54,5	59,5	10	1 00620 01 0	0,415	6	1	0A3S2	71 0
55 / 65	119,0	54,5	64,5	10	1 00620 01 0	0,430	6	1	0A3S2	72 0
60 / 60	119,0	59,5	59,5	10	1 00620 01 0	0,430	6	1	0A3S2	40 0
65 / 55	119,0	64,5	54,5	10	1 00620 01 0	0,430	6	1	0A3S2	86 0



- Double cylinders with adjustable thumb turn shaft
- to be combined with inside rose item 1.06458.20
- ON REQUEST
- Knobs:  
-item 1.06353.00  
-item 1.06354.00

30 / 30	59,0	29,5	29,5	10	1 00620 01 0	0,284	6	1	0A3S7	07 0
40 / 30	69,0	39,5	29,5	10	1 00620 01 0	0,312	6	1	0A3S7	12 0
50 / 30	79,0	49,5	29,5	10	1 00620 01 0	0,329	6	1	0A3S7	90 0
60 / 30	89,0	59,5	29,5	10	1 00620 01 0	0,359	6	1	0A3S7	87 0
70 / 30	99,0	69,5	29,5	10	1 00620 01 0	0,370	6	1	0A3S7	88 0

Dimensional drawings

