

ASTRAL EUROPEAN PROFILE CYLINDERS



MAIN FEATURES

ACTIVE SECURITY

- **NUMBER OF KEY-DIFFERS:** over 1,600,000

PASSIVE SECURITY

- **Push resistance:** projecting cam.
- **Drill resistance:**
 - one hardened steel inserts into both sides of the cylinder body.
 - hardened steel pin and driver in first position.
- **Picking resistance:** special shape of the drivers.

KEY ARRANGEMENTS CAPACITY

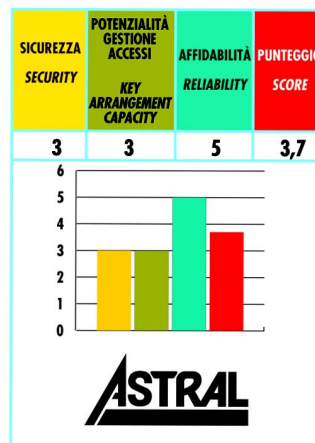
- 63,000 different cylinders per MK key (including passive pins capacity).
- Other configurations available on request.

RELIABILITY

- 100,000 cycles (compliant with EN 1303 – Durability Grade 6)

CERTIFICATIONS

- Manufactured in conformity with:
 - EN 1303: grade 6 Durability, grade 3 Security
 - DIN 18254 grade 2 (ref. DIN EN 1303)
 - SKG ** (special version)



Technical features:

CYLINDER:

- 10 pins key biting system
- brass body
- brass plugs
- self-lubricating sintered steel projecting DIN cam
- pins:
 - in wear resistant bronze
 - in hardened steel in first position
- drivers:
 - in brass
 - in hardened steel in first position
- phosphor bronze springs

KEY:

- flat reversible keys
- in a special brass alloy nickel plated
- numbered on key head
- 2,9 mm thickness
- 0,48 mm depth

Finishes:

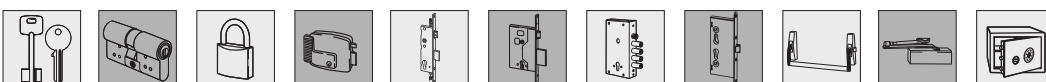
- Standard: sanded brass (fin. 00)
- On request: polished brass (fin. 66), nickel plated brass (fin. 12)

On request:

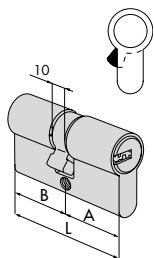
- KA, MK, GMK, GGMK, CE, CA, C5, CL (Key with plastic head), CP (Key with plastic head), PP and relevant models

Supplied as standard:

- fixing screw
- 3 keys art 1.00620.01.0
- SECURITY CARD

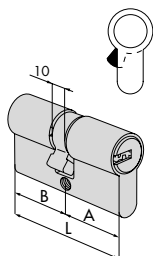


Type	Description	Key item				Kg	Pcs	ITEM			
		L	A	B	Pins			Type	Dim.	Hand	Fin.



• Double cylinder

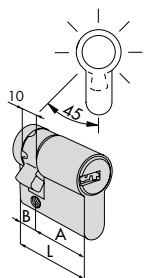
28 / 28	55,4	27,7	27,7	10	1 00620 01 0	0,232	12	1	0A310 05 0
30 / 30	59,0	29,5	29,5	10	1 00620 01 0	0,235	12	1	0A310 07 0
28 / 32	59,2	27,7	31,5	10	1 00620 01 0	0,230	12	1	0A310 08 0
28 / 34	61,2	27,7	33,5	10	1 00620 01 0	0,234	12	1	0A310 06 0
28 / 36	63,2	27,7	35,5	10	1 00620 01 0	0,240	12	1	0A310 09 0
30 / 35	64,0	29,5	34,5	10	1 00620 01 0	0,243	12	1	0A310 26 0
33 / 33	65,0	32,5	32,5	10	1 00620 01 0	0,258	12	1	0A310 10 0
35 / 35	69,0	34,5	34,5	10	1 00620 01 0	0,272	12	1	0A310 13 0
40 / 30	69,0	39,5	29,5	10	1 00620 01 0	0,272	12	1	0A310 12 0
28 / 43	70,2	27,7	42,5	10	1 00620 01 0	0,262	12	1	0A310 11 0
30 / 45	74,0	29,5	44,5	10	1 00620 01 0	0,274	12	1	0A310 27 0
35 / 40	74,0	34,5	39,5	10	1 00620 01 0	0,274	12	1	0A310 28 0
30 / 50	79,0	29,5	49,5	10	1 00620 01 0	0,301	12	1	0A310 17 0
35 / 45	79,0	34,5	44,5	10	1 00620 01 0	0,289	12	1	0A310 19 0
40 / 40	79,0	39,5	39,5	10	1 00620 01 0	0,289	12	1	0A310 18 0
30 / 55	84,0	29,5	54,5	10	1 00620 01 0	0,304	12	1	0A310 33 0
35 / 50	84,0	34,5	49,5	10	1 00620 01 0	0,360	12	1	0A310 31 0
40 / 45	84,0	39,5	44,5	10	1 00620 01 0	0,304	12	1	0A310 30 0
43 / 43	85,0	42,5	42,5	10	1 00620 01 0	0,308	12	1	0A310 46 0
30 / 60	89,0	29,5	59,5	10	1 00620 01 0	0,320	12	1	0A310 20 0
35 / 55	89,0	34,5	54,5	10	1 00620 01 0	0,332	12	1	0A310 32 0
40 / 50	89,0	39,5	49,5	10	1 00620 01 0	0,320	12	1	0A310 21 0
45 / 45	89,0	44,5	44,5	10	1 00620 01 0	0,333	12	1	0A310 29 0
30 / 65	94,0	29,5	64,5	10	1 00620 01 0	0,334	6	1	0A310 41 0
35 / 60	94,0	34,5	59,5	10	1 00620 01 0	0,390	6	1	0A310 38 0
40 / 55	94,0	39,5	54,5	10	1 00620 01 0	0,355	6	1	0A310 42 0
45 / 50	94,0	44,5	49,5	10	1 00620 01 0	0,334	6	1	0A310 39 0
30 / 70	99,0	29,5	69,5	10	1 00620 01 0	0,349	6	1	0A310 24 0
35 / 65	99,0	34,5	64,5	10	1 00620 01 0	0,349	6	1	0A310 22 0
40 / 60	99,0	39,5	59,5	10	1 00620 01 0	0,349	6	1	0A310 25 0
45 / 55	99,0	44,5	54,5	10	1 00620 01 0	0,349	6	1	0A310 43 0
50 / 50	99,0	49,5	49,5	10	1 00620 01 0	0,349	6	1	0A310 23 0
30 / 80	109,0	29,5	79,5	10	1 00620 01 0	0,378	6	1	0A310 37 0
40 / 70	109,0	39,5	69,5	10	1 00620 01 0	0,400	6	1	0A310 35 0
50 / 60	109,0	49,5	59,5	10	1 00620 01 0	0,402	6	1	0A310 36 0
55 / 55	109,0	54,5	54,5	10	1 00620 01 0	0,378	6	1	0A310 70 0
55 / 60	114,0	54,5	59,5	10	1 00620 01 0	0,420	6	1	0A310 71 0
60 / 60	119,0	59,5	59,5	10	1 00620 01 0	0,410	6	1	0A310 40 0



• Double cylinder clutching system

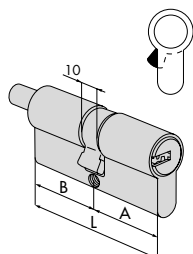
30 / 30	59,0	29,5	29,5	10	1 00620 01 0	0,228	12	1	0A311 07 0
28 / 34	61,2	27,7	33,5	10	1 00620 01 0	0,235	12	1	0A311 06 0
28 / 36	63,2	27,7	35,5	10	1 00620 01 0	0,241	12	1	0A311 09 0
33 / 33	65,0	32,5	32,5	10	1 00620 01 0	0,245	12	1	0A311 10 0
35 / 35	69,0	34,5	34,5	10	1 00620 01 0	0,258	12	1	0A311 13 0
40 / 30	69,0	39,5	29,5	10	1 00620 01 0	0,258	12	1	0A311 12 0
28 / 43	70,2	27,7	42,5	10	1 00620 01 0	0,262	12	1	0A311 11 0
30 / 50	79,0	29,5	49,5	10	1 00620 01 0	0,289	12	1	0A311 17 0
35 / 45	79,0	34,5	44,5	10	1 00620 01 0	0,289	12	1	0A311 19 0
40 / 40	79,0	39,5	39,5	10	1 00620 01 0	0,289	12	1	0A311 18 0
45 / 45	89,0	44,5	44,5	10	1 00620 01 0	0,319	12	1	0A311 29 0

Type	Description	Key item				Kg	Pcs	ITEM			
		L	A	B	Pins			Type	Dim.	Hand	Fin.



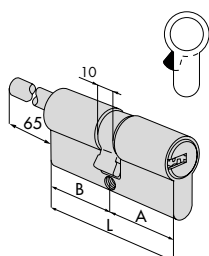
- Half cylinder adjustable cam in 8 position

30 / 10	39,5	29,5	10,0	10	1 00620 01 0	0,186	12	1	OA314	02 0
35 / 10	44,5	34,5	10,0	10	1 00620 01 0	0,201	12	1	OA314	07 0
37 / 10	46,5	36,5	10,0	10	1 00620 01 0	0,190	12	1	OA314	10 0
40 / 10	49,5	39,5	10,0	10	1 00620 01 0	0,199	12	1	OA314	03 0
43 / 10	52,5	42,5	10,0	10	1 00620 01 0	0,208	12	1	OA314	11 0
45 / 10	54,5	44,5	10,0	10	1 00620 01 0	0,212	12	1	OA314	08 0
50 / 10	59,5	49,5	10,0	10	1 00620 01 0	0,227	12	1	OA314	04 0
60 / 10	69,5	59,5	10,0	10	1 00620 01 0	0,257	12	1	OA314	05 0
65 / 10	74,5	64,5	10,0	10	1 00620 01 0	0,272	12	1	OA314	21 0
70 / 10	79,5	69,5	10,0	10	1 00620 01 0	0,287	12	1	OA314	06 0
80 / 10	89,5	79,5	10,0	10	1 00620 01 0	0,317	12	1	OA314	20 0
95 / 10	103,5	93,5	10,0	10	1 00620 01 0	0,362	6	1	OA314	13 0



- Double cylinder with thumb turn shaft
- ON REQUEST:
Knob
-art. 1.06353.00
-art. 1.06354.00

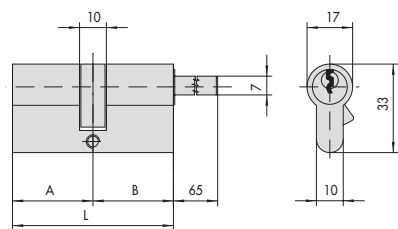
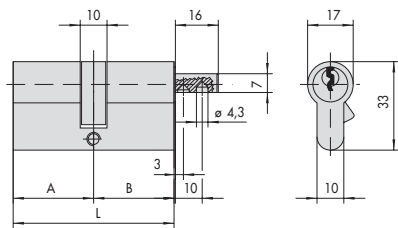
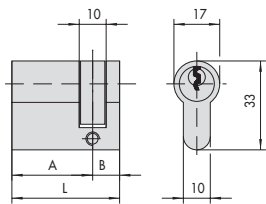
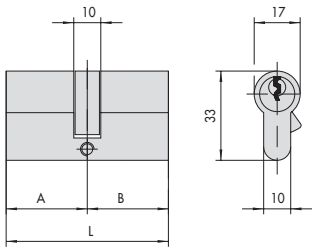
30 / 30	59,0	29,5	29,5	10	1 00620 01 0	0,244	12	1	OA312	07 0
30 / 35	64,0	29,5	34,5	10	1 00620 01 0	0,264	12	1	OA312	26 0
35 / 30	64,0	34,5	29,5	10	1 00620 01 0	0,259	12	1	OA312	81 0
33 / 33	65,0	32,5	32,5	10	1 00620 01 0	0,267	12	1	OA312	10 0
30 / 40	69,0	29,5	39,5	10	1 00620 01 0	0,279	12	1	OA312	82 0
35 / 35	69,0	34,5	34,5	10	1 00620 01 0	0,279	12	1	OA312	13 0
40 / 30	69,0	39,5	29,5	10	1 00620 01 0	0,279	12	1	OA312	12 0
35 / 40	74,0	34,5	39,5	10	1 00620 01 0	0,294	12	1	OA312	28 0
40 / 35	74,0	39,5	34,5	10	1 00620 01 0	0,294	12	1	OA312	83 0
30 / 50	79,0	29,5	49,5	10	1 00620 01 0	0,318	6	1	OA312	17 0
35 / 45	79,0	34,5	44,5	10	1 00620 01 0	0,309	6	1	OA312	19 0
40 / 40	79,0	39,5	39,5	10	1 00620 01 0	0,309	6	1	OA312	18 0
45 / 35	79,0	44,5	34,5	10	1 00620 01 0	0,309	6	1	OA312	85 0
40 / 45	84,0	39,5	44,5	10	1 00620 01 0	0,324	6	1	OA312	30 0
45 / 40	84,0	44,5	39,5	10	1 00620 01 0	0,324	6	1	OA312	84 0
43 / 43	85,0	42,5	42,5	10	1 00620 01 0	0,326	6	1	OA312	46 0
30 / 60	89,0	29,5	59,5	10	1 00620 01 0	0,353	6	1	OA312	20 0
40 / 50	89,0	39,5	49,5	10	1 00620 01 0	0,350	6	1	OA312	21 0
45 / 45	89,0	44,5	44,5	10	1 00620 01 0	0,347	6	1	OA312	29 0
40 / 55	94,0	39,5	54,5	10	1 00620 01 0	0,355	6	1	OA312	42 0
45 / 50	94,0	44,5	49,5	10	1 00620 01 0	0,367	6	1	OA312	39 0
45 / 55	99,0	44,5	54,5	10	1 00620 01 0	0,370	6	1	OA312	43 0
50 / 50	99,0	49,5	49,5	10	1 00620 01 0	0,370	6	1	OA312	23 0
45 / 60	104,0	44,5	59,5	10	1 00620 01 0	0,398	6	1	OA312	54 0
55 / 50	104,0	54,5	49,5	10	1 00620 01 0	0,384	6	1	OA312	64 0
30 / 80	109,0	29,5	79,5	10	1 00620 01 0	0,400	6	1	OA312	37 0
40 / 70	109,0	39,5	69,5	10	1 00620 01 0	0,400	6	1	OA312	35 0
50 / 60	109,0	49,5	59,5	10	1 00620 01 0	0,400	6	1	OA312	36 0
60 / 50	109,0	59,5	49,5	10	1 00620 01 0	0,410	6	1	OA312	89 0
55 / 60	114,0	54,5	59,5	10	1 00620 01 0	0,415	6	1	OA312	71 0
55 / 65	119,0	54,5	64,5	10	1 00620 01 0	0,430	6	1	OA312	72 0
60 / 60	119,0	59,5	59,5	10	1 00620 01 0	0,430	6	1	OA312	40 0
65 / 55	119,0	64,5	54,5	10	1 00620 01 0	0,430	6	1	OA312	86 0



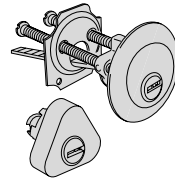
- Double cylinder with adjustable thumb turn shaft
- Can be combined with internal rose art. 1.06458.20
- ON REQUEST:
Knob
-art. 1.06353.00
-art. 1.06354.00

30 / 30	59,0	29,5	29,5	10	1 00620 01 0	0,284	6	1	OA317	07 0
40 / 30	69,0	39,5	29,5	10	1 00620 01 0	0,312	6	1	OA317	12 0
50 / 30	79,0	49,5	29,5	10	1 00620 01 0	0,329	6	1	OA317	90 0
60 / 30	89,0	59,5	29,5	10	1 00620 01 0	0,359	6	1	OA317	87 0
70 / 30	99,0	69,5	29,5	10	1 00620 01 0	0,370	6	1	OA317	88 0

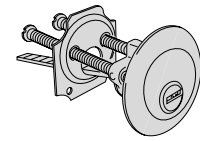
Dimensional drawings



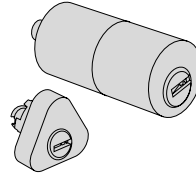
Other available model



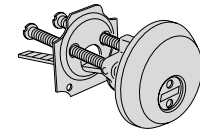
1.0A112.00.0
1.0A114.00.0



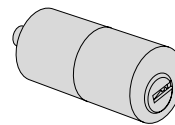
1.0A510.00.0



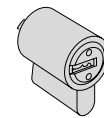
1.0A116.00.0
1.0A120.00.0
1.0A149.00.0
1.0A155.00.0



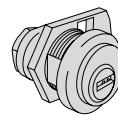
1.0A510.11.0



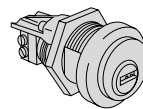
1.0A210.00.0



1.0A610.00.0



1.0A410.00.0



1.0A415.01.0
1.0A415.03.0