

SNAP RESISTANT AP3 EUROPEAN PROFILE CYLINDERS



MAIN FEATURES

ACTIVE SECURITY

- **Patented System:** key with mobile element.
- **Security Card:** for the authorised duplication system. Keys can only be duplicated by CISA or CISA Solution Partners, and only upon production of the Security Card.
- **Number of key-differs:** over 40,000,000.

PASSIVE SECURITY

- **Tearing Resistance - SNAP RESISTANT**
 - Core made of 6 rigid segments (greater breaking strength) and 1 flexible segment (greater flexibility). Segment pack extends through the entire length of the cylinder. It is visible at both ends, even when the cylinder is installed in the door.
- **Push resistance:** projecting cam.
- **Drill resistance:**
 - one hardened steel insert into both sides of the cylinder body
 - 3 hardened steel inserts into the plug
 - hardened steel pins and drivers and passive pins
- **Picking resistance:**
 - special shape of drivers.
 - one active pin, patented system

KEY ARRANGEMENTS CAPACITY

- 132,000 different cylinders per MK key (including passive pins capacity).
- Other configurations available on request.

RELIABILITY

- 100,000 cycles.

NORMS

- Compliant with EN 1303 norm:
 - Durability: grade 6 (100.000 cycles)
 - Security: grade 4

CERTIFICATIONS

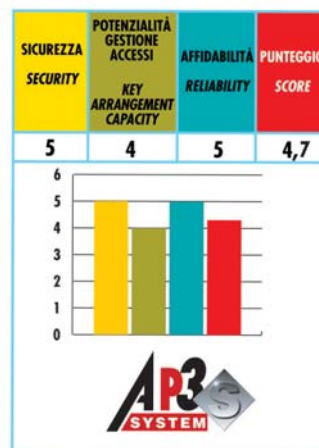
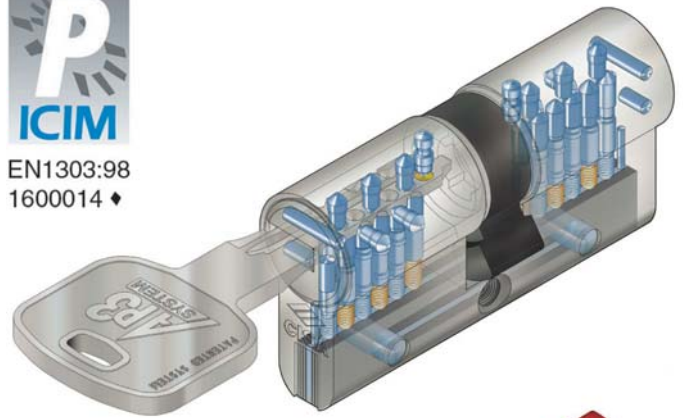
- ICIM EN 1303:98 1600014
- SKG **

PATENTS

- PCT/EP99/07611
- Utility model B02003U000006 (snap resistant features)



EN1303:98
1600014 ♦



Technical features:

CYLINDER:

- 12 pins (6+1 active, 5 passive) key biting system
- brass body with segment pack extended through the entire length of the cylinder (half cylinder, various cylinder and rim cylinders excluded)
- brass plugs
- self-lubricating sintered steel projecting DIN cam
- pins:
 - in hardened steel
 - special antipicking shape
- drivers:
 - in hardened steel cylindrical and mushroom-like for antipicking
- phosphor bronze and steel springs

KEY:

- flat reversible keys
- in nickel silver alloy
- numbered on key head
- 2,9 mm thickness
- 0,48 mm depth
- compatible with protective roses
- ALI key on request

Finishes:

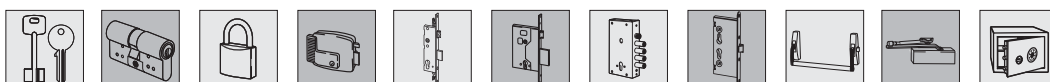
- Standard: nickel-plated sand brass (fin. 12)
- On request: polished brass (fin. 66)

Supplied as standard:

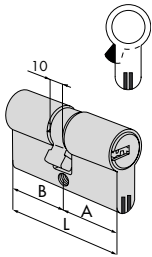
- fixing screw
- user and maintenance instructions
- 3 keys art 1.00770.00.0
- SECURITY CARD

On request:

- KA, MK, GMK, GGMK, CE, CA, CL (ALI key), C5, PP and relevant model
- DADA, 1-2-3, 1-2 plus construction key systems (with ALI key only)

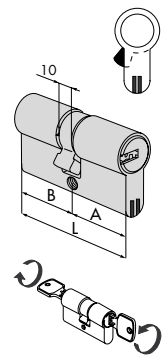


Type	Description	Key item				Unitweight	Pieces	ITEM			
		L	A	B	Pins			Type	Dim.	Hand	Fin.



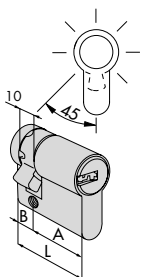
• SNAP RESISTANT double cylinder

30 / 30	59,0	29,5	29,5	12	1 00770 00 0	0,250	1	1	OH350	07	0	12
30 / 35	64,0	29,5	34,5	12	1 00770 00 0	0,260	1	1	OH350	26	0	12
40 / 30	69,0	39,5	29,5	12	1 00770 00 0	0,275	1	1	OH350	12	0	12
35 / 35	69,0	34,5	34,5	12	1 00770 00 0	0,270	1	1	OH350	13	0	12
30 / 45	74,0	29,5	44,5	12	1 00770 00 0	0,290	1	1	OH350	27	0	12
35 / 40	74,0	34,5	39,5	12	1 00770 00 0	0,285	1	1	OH350	28	0	12
30 / 50	79,0	29,5	49,5	12	1 00770 00 0	0,305	1	1	OH350	17	0	12
35 / 45	79,0	34,5	44,5	12	1 00770 00 0	0,300	1	1	OH350	19	0	12
40 / 40	79,0	39,5	39,5	12	1 00770 00 0	0,300	1	1	OH350	18	0	12
30 / 55	84,0	29,5	54,5	12	1 00770 00 0	0,318	1	1	OH350	33	0	12
35 / 50	84,0	34,5	49,5	12	1 00770 00 0	0,315	1	1	OH350	31	0	12
40 / 45	84,0	39,5	44,5	12	1 00770 00 0	0,315	1	1	OH350	30	0	12
30 / 60	89,0	29,5	59,5	12	1 00770 00 0	0,335	1	1	OH350	20	0	12
35 / 55	89,0	34,5	54,5	12	1 00770 00 0	0,330	1	1	OH350	32	0	12
40 / 50	89,0	39,5	49,5	12	1 00770 00 0	0,330	1	1	OH350	21	0	12
45 / 45	89,0	44,5	44,5	12	1 00770 00 0	0,330	1	1	OH350	29	0	12
40 / 55	94,0	39,5	54,5	12	1 00770 00 0	0,345	1	1	OH350	42	0	12
45 / 50	94,0	44,5	49,5	12	1 00770 00 0	0,345	1	1	OH350	39	0	12
30 / 70	99,0	29,5	69,5	12	1 00770 00 0	0,380	1	1	OH350	24	0	12
35 / 65	99,0	34,5	64,5	12	1 00770 00 0	0,365	1	1	OH350	22	0	12
40 / 60	99,0	39,5	59,5	12	1 00770 00 0	0,365	1	1	OH350	25	0	12
45 / 55	99,0	44,5	54,5	12	1 00770 00 0	0,365	1	1	OH350	43	0	12
50 / 50	99,0	49,5	49,5	12	1 00770 00 0	0,365	1	1	OH350	23	0	12
30 / 80	109,0	29,5	79,5	12	1 00770 00 0	0,395	1	1	OH350	37	0	12
40 / 70	109,0	39,5	69,5	12	1 00770 00 0	0,390	1	1	OH350	35	0	12
50 / 60	109,0	49,5	59,5	12	1 00770 00 0	0,390	1	1	OH350	36	0	12
55 / 55	109,0	54,5	54,5	12	1 00770 00 0	0,390	1	1	OH350	70	0	12
40 / 80	119,0	39,5	79,5	12	1 00770 00 0	0,420	1	1	OH350	60	0	12



• SNAP RESISTANT double cylinder clutching system

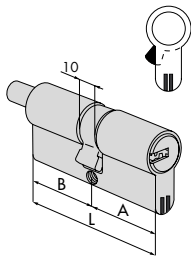
30 / 30	59,0	29,5	29,5	12	1 00770 00 0	0,250	1	1	OH351	07	0	12
40 / 30	69,0	39,5	29,5	12	1 00770 00 0	0,275	1	1	OH351	12	0	12
35 / 35	69,0	34,5	34,5	12	1 00770 00 0	0,270	1	1	OH351	13	0	12
30 / 50	79,0	29,5	49,5	12	1 00770 00 0	0,305	1	1	OH351	17	0	12
35 / 45	79,0	34,5	44,5	12	1 00770 00 0	0,300	1	1	OH351	19	0	12
40 / 40	79,0	39,5	39,5	12	1 00770 00 0	0,300	1	1	OH351	18	0	12
45 / 45	89,0	44,5	44,5	12	1 00770 00 0	0,330	1	1	OH351	29	0	12



• Half cylinder adjustable cam in 8 position
• Body without segment pack

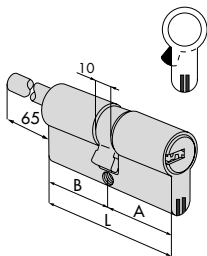
30 / 10	39,5	29,5	10,0	12	1 00770 00 0	0,185	1	1	OH314	02	0	12
35 / 10	44,5	34,5	10,0	12	1 00770 00 0	0,195	1	1	OH314	07	0	12
40 / 10	49,5	39,5	10,0	12	1 00770 00 0	0,215	1	1	OH314	03	0	12
45 / 10	54,5	44,5	10,0	12	1 00770 00 0	0,225	1	1	OH314	08	0	12
50 / 10	59,5	49,5	10,0	12	1 00770 00 0	0,245	1	1	OH314	04	0	12
60 / 10	69,5	59,5	10,0	12	1 00770 00 0	0,275	1	1	OH314	05	0	12
65 / 10	74,5	64,5	10,0	12	1 00770 00 0	0,290	1	1	OH314	21	0	12
70 / 10	79,5	69,5	10,0	12	1 00770 00 0	0,305	1	1	OH314	06	0	12
80 / 10	89,5	79,5	10,0	12	1 00770 00 0	0,330	1	1	OH314	20	0	12
95 / 10	104,5	94,5	10,0	12	1 00770 00 0	0,380	1	1	OH314	13	0	12

Type	Description	Key item			Unitweight	Pieces	ITEM			
		L	A	B			Type	Dim.	Hand	Fin.



- SNAP RESISTANT double cylinder with thumb turn shaft
- ON REQUEST:
Knob
-art. 1.06353.00.0
-art. 1.06354.00.0

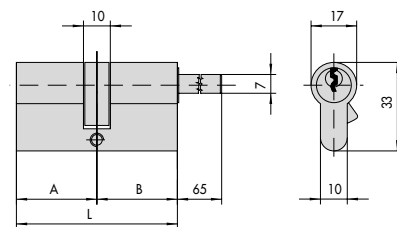
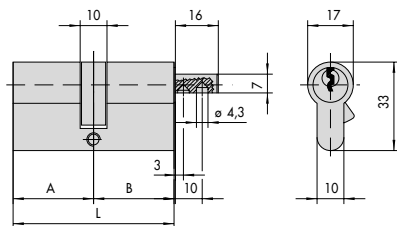
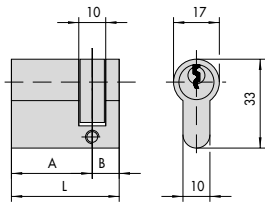
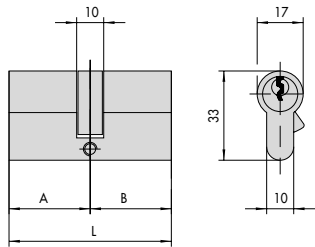
30 / 30	59,0	29,5	29,5	12	1 00770 00 0	0,265	1	1	OH3S2	07 0 12
30 / 40	69,0	29,5	39,5	12	1 00770 00 0	0,288	1	1	OH3S2	82 0 12
40 / 30	69,0	39,5	29,5	12	1 00770 00 0	0,288	1	1	OH3S2	12 0 12
35 / 35	69,0	34,5	34,5	12	1 00770 00 0	0,285	1	1	OH3S2	13 0 12
35 / 40	74,0	34,5	39,5	12	1 00770 00 0	0,295	1	1	OH3S2	28 0 12
30 / 50	79,0	29,5	49,5	12	1 00770 00 0	0,315	1	1	OH3S2	17 0 12
35 / 45	79,0	34,5	44,5	12	1 00770 00 0	0,310	1	1	OH3S2	19 0 12
40 / 40	79,0	39,5	39,5	12	1 00770 00 0	0,310	1	1	OH3S2	18 0 12
40 / 45	84,0	39,5	44,5	12	1 00770 00 0	0,325	1	1	OH3S2	30 0 12
30 / 60	89,0	29,5	59,5	12	1 00770 00 0	0,345	1	1	OH3S2	20 0 12
40 / 50	89,0	39,5	49,5	12	1 00770 00 0	0,340	1	1	OH3S2	21 0 12
45 / 45	89,0	44,5	44,5	12	1 00770 00 0	0,340	1	1	OH3S2	29 0 12
40 / 55	94,0	39,5	54,5	12	1 00770 00 0	0,345	1	1	OH3S2	42 0 12
45 / 55	99,0	44,5	54,5	12	1 00770 00 0	0,360	1	1	OH3S2	43 0 12
50 / 50	99,0	49,5	49,5	12	1 00770 00 0	0,360	1	1	OH3S2	23 0 12
55 / 50	104,0	54,5	49,5	12	1 00770 00 0	0,370	1	1	OH3S2	64 0 12
55 / 60	114,0	54,5	59,5	12	1 00770 00 0	0,390	1	1	OH3S2	71 0 12
60 / 60	119,0	59,5	59,5	12	1 00770 00 0	0,405	1	1	OH3S2	40 0 12
65 / 55	119,0	64,5	54,5	12	1 00770 00 0	0,405	1	1	OH3S2	86 0 12
60 / 50	109,0	59,5	49,5	12	1 00770 00 0	0,380	1	1	OH3S2	89 0 12



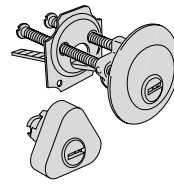
- SNAP RESISTANT double cylinder with adjustable thumb turn shaft
- Can be combined with internal rose art. 1.06458.20
- ON REQUEST:
Knob
-art. 1.06353.00
-art. 1.06354.00

30 / 30	59,0	29,5	29,5	12	1 00770 00 0	0,265	1	1	OH3S7	07 0 12
40 / 30	69,0	39,5	29,5	12	1 00770 00 0	0,288	1	1	OH3S7	12 0 12
50 / 30	79,0	49,5	29,5	12	1 00770 00 0	0,310	1	1	OH3S7	90 0 12
60 / 30	89,0	59,5	29,5	12	1 00770 00 0	0,360	1	1	OH3S7	87 0 12
70 / 30	99,0	69,5	29,5	12	1 00770 00 0	0,370	1	1	OH3S7	88 0 12

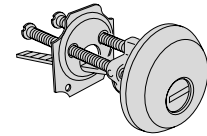
Dimentional drawings



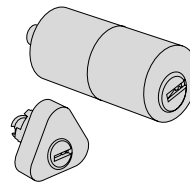
Other available model, without segment pack



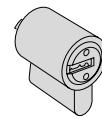
1.0H112.00.0.12
1.0H114.00.0.12
1.0H156.00.0.12



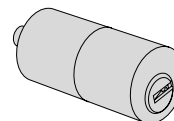
1.0H510.10.0.12



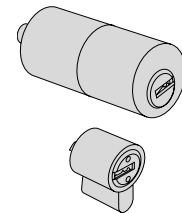
1.0H149.00.0.12
1.0H155.00.0.12
1.0H116.00.0.12
1.0H120.00.0.12



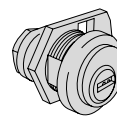
1.0H610.00.0



1.0H210.00.0.12

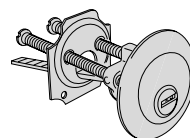


1.0H150.00.0.12



1.0H410.00.0.12

1.0H415.01.0.12
1.0H415.03.0.12



1.0H510.00.0.12

1.0H610.10.0
1.0H611.10.0