



MAIN FEATURES

ACTIVE SECURITY

- CISA patented system
- Registered key
- Number of key-bitings: over 7,000,000.

PASSIVE SECURITY

- **Push/pull resistance: off center cam.**
- **Drill resistance:**
 - 2 hardened steel inserts into both sides of the cylinder body.
 - 2 hardened steel inserts into both the plugs.
 - Hardened steel pin and driver in first position.
- **Picking resistance:**
 - specially designed key way.
 - dead-locking pin.
 - mushroom-like drivers

KEY ARRANGEMENTS CAPACITY

- 300 different cylinders per MK key with dead-locking pin.
- 2,000 different cylinders per MK key, no dead-locking pin. Excluding passive pins capacity in both cases.

RELIABILITY

- 100,000 cycles

NORMS

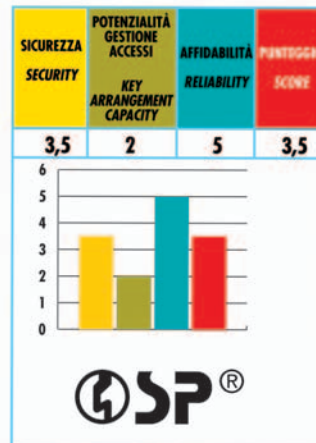
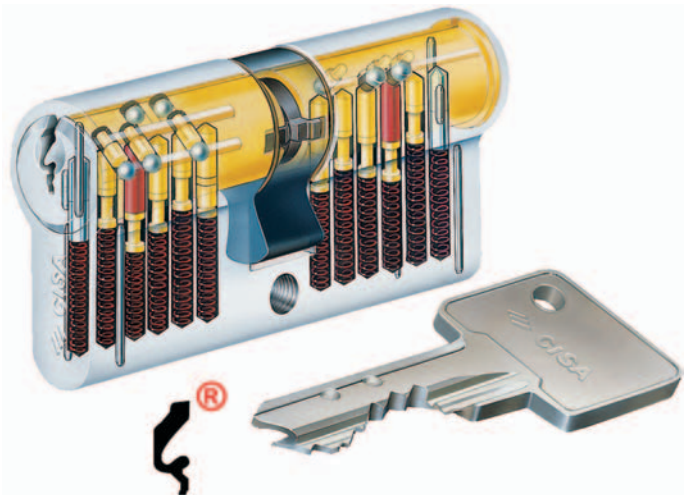
- Compliant with EN 1303 norm:
 - Durability: grade 6 (100.000 cycles)
 - Security: grade 3

CERTIFICATIONS

- SKG ** (special version)

PATENTS

- EEC Patent No. 0 166 945 B1
- USA Patent No. 4.683.740
- Registered key, file number 11004D/2004



Technical features:

CYLINDER:

- 10 pins (6 actives, 4 passives) key biting system
- brass body
- brass plugs
- self-lubricating sintered steel projecting DIN cam
- pins:
 - in wear resistant bronze
 - in hardened steel in first position
 - side stainless steel balls
- drivers:
 - in brass, cylindrical and mushroom-like for an anti-picking function
 - in hardened steel in first position
- phosphor bronze springs

KEY:

- in nickel silver alloy
- numbered on key head
- 3,2 mm thickness
- 0,5 mm depth

Finishes:

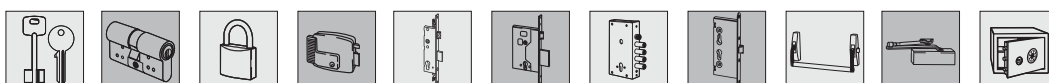
- Standard: nickel-plated sand brass (fin. 12)
- On request: polished brass (fin. 66)

On request:

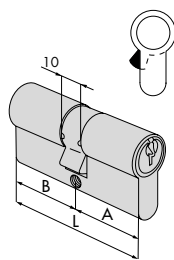
- KA, MK, CE, CA, C5, CL (long key with plastic bow, compatible with protective roses), PP and relevant models

Supplied as standard:

- fixing screw
- user and maintenance instructions
- 3 keys art 1.00450.01.0
- CODE CARD

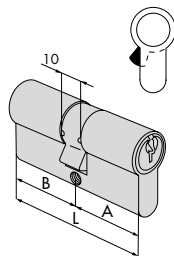


Type	Description	Key item				Unitweight	Pieces	ITEM			
		L	A	B	Pins			Type	Dim.	Hand	Fin.



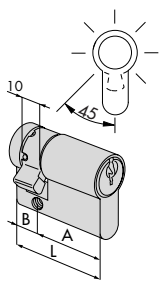
• Double cylinder

28 / 28	55,4	27,7	27,7	5	1 00450 01 1	0,244	1	1	08815 05 0 12
30 / 30	59,0	29,5	29,5	6	1 00450 01 1	0,254	1	1	08815 07 0 12
28 / 34	61,2	27,7	33,5	5	1 00450 01 1	0,264	1	1	08815 06 0 12
30 / 33	62,0	29,5	32,5	6	1 00450 01 1	0,240	1	1	08815 08 0 12
28 / 36	63,2	27,7	35,5	5	1 00450 01 1	0,270	1	1	08815 09 0 12
30 / 35	64,0	29,5	34,5	6	1 00450 01 1	0,269	1	1	08815 26 0 12
33 / 33	65,0	32,5	32,5	6	1 00450 01 1	0,270	1	1	08815 10 0 12
30 / 40	69,0	29,5	39,5	6	1 00450 01 1	0,284	1	1	08815 12 0 12
35 / 35	69,0	34,5	34,5	6	1 00450 01 1	0,284	1	1	08815 13 0 12
28 / 42	69,2	27,7	41,5	5	1 00450 01 1	0,288	1	1	08815 11 0 12
30 / 43	72,0	29,5	42,5	6	1 00450 01 1	0,293	1	1	08815 14 0 12
37 / 37	73,0	36,5	36,5	6	1 00450 01 1	0,296	1	1	08815 15 0 12
30 / 45	74,0	29,5	44,5	6	1 00450 01 1	0,297	1	1	08815 27 0 12
35 / 40	74,0	34,5	39,5	6	1 00450 01 1	0,303	1	1	08815 28 0 12
30 / 50	79,0	29,5	49,5	6	1 00450 01 1	0,315	1	1	08815 17 0 12
35 / 45	79,0	34,5	44,5	6	1 00450 01 1	0,314	1	1	08815 19 0 12
40 / 40	79,0	39,5	39,5	6	1 00450 01 1	0,314	1	1	08815 18 0 12
28 / 54	81,2	27,7	53,5	5	1 00450 01 1	0,324	1	1	08815 16 0 12
40 / 45	84,0	39,5	44,5	6	1 00450 01 1	0,330	1	1	08815 30 0 12
43 / 43	85,0	42,5	42,5	6	1 00450 01 1	0,335	1	1	08815 46 0 12
30 / 60	89,0	29,5	59,5	6	1 00450 01 1	0,344	1	1	08815 20 0 12
40 / 50	89,0	39,5	49,5	6	1 00450 01 1	0,344	1	1	08815 21 0 12
45 / 45	89,0	44,5	44,5	6	1 00450 01 1	0,343	1	1	08815 29 0 12
30 / 70	99,0	29,5	69,5	6	1 00450 01 1	0,376	1	1	08815 24 0 12
35 / 65	99,0	34,5	64,5	6	1 00450 01 1	0,377	1	1	08815 22 0 12
40 / 60	99,0	39,5	59,5	6	1 00450 01 1	0,377	1	1	08815 25 0 12
50 / 50	99,0	49,5	49,5	6	1 00450 01 1	0,374	1	1	08815 23 0 12
30 / 80	109,0	29,5	79,5	6	1 00450 01 1	0,405	1	1	08815 37 0 12
40 / 70	109,0	39,5	69,5	6	1 00450 01 1	0,409	1	1	08815 35 0 12
50 / 60	109,0	49,5	59,5	6	1 00450 01 1	0,406	1	1	08815 36 0 12



• Double cylinder clutching system

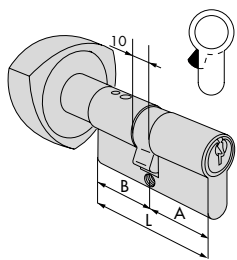
31 / 31	61,6	30,8	30,8	6	1 00450 01 1	0,230	1	1	08875 07 0 12
31 / 35	65,3	30,8	34,5	6	1 00450 01 1	0,250	1	1	08875 26 0 12



• Half cylinder adjustable cam in 8 position

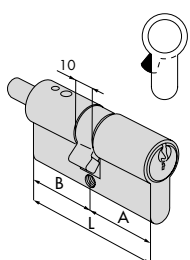
30 / 10	39,5	29,5	10,0	6	1 00450 01 1	0,205	1	1	08835 02 0 12
33 / 10	42,5	32,5	10,0	6	1 00450 01 1	0,179	1	1	08835 09 0 12
35 / 10	44,5	34,5	10,0	6	1 00450 01 1	0,185	1	1	08835 07 0 12
37 / 10	46,5	36,5	10,0	6	1 00450 01 1	0,192	1	1	08835 10 0 12
40 / 10	49,5	39,5	10,0	6	1 00450 01 1	0,201	1	1	08835 03 0 12
43 / 10	52,5	42,5	10,0	6	1 00450 01 1	0,209	1	1	08835 11 0 12
50 / 10	59,5	49,5	10,0	6	1 00450 01 1	0,230	1	1	08835 04 0 12

Type	Description	Key item						Unitweight	Pieces	ITEM				
		L	A	B	Plms					Type	Dim.	Hand	Fin.	Pers.



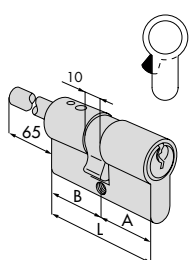
• Double cylinder Light bronze anodized aluminium knob

31 / 23	54,0	30,8	23,2	6	1	00450 01 1	0,330	1	1	08855 03 0 12
33 / 27	59,5	32,5	27,0	6	1	00450 01 1	0,375	1	1	08855 05 0 12
31 / 31	61,6	30,8	30,8	6	1	00450 01 1	0,340	1	1	08855 04 0 12
31 / 33	63,3	30,8	32,5	6	1	00450 01 1	0,350	1	1	08855 07 0 12
33 / 31	63,3	32,5	30,8	6	1	00450 01 1	0,350	1	1	08855 06 0 12
31 / 36	67,1	30,8	36,3	6	1	00450 01 1	0,360	1	1	08855 09 0 12
36 / 31	67,1	36,3	30,8	6	1	00450 01 1	0,360	1	1	08855 10 0 12
31 / 43	73,3	30,8	42,5	6	1	00450 01 1	0,420	1	1	08855 11 0 12
43 / 31	73,3	42,5	30,8	6	1	00450 01 1	0,370	1	1	08855 12 0 12
31 / 50	80,8	30,8	50,0	6	1	00450 01 1	0,390	1	1	08855 26 0 12
33 / 50	82,5	32,5	50,0	6	1	00450 01 1	0,450	1	1	08855 29 0 12
43 / 43	85,0	42,5	42,5	6	1	00450 01 1	0,410	1	1	08855 25 0 12
31 / 60	90,8	30,8	60,0	6	1	00450 01 1	0,430	1	1	08855 27 0 12
31 / 80	110,8	30,8	80,0	6	1	00450 01 1	0,440	1	1	08855 13 0 12



• Double cylinder with thumb turn shaft
 • ON REQUEST:
 Knob
 -art. 1.06353.00
 -art. 1.06354.00

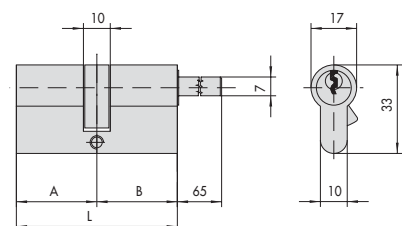
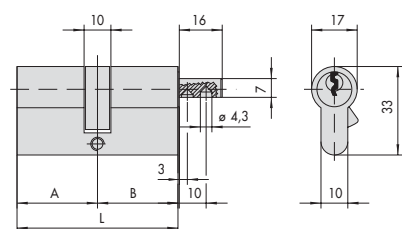
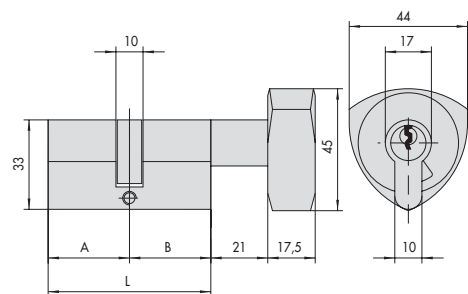
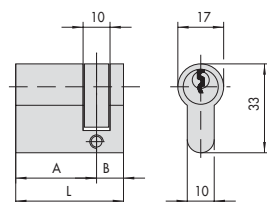
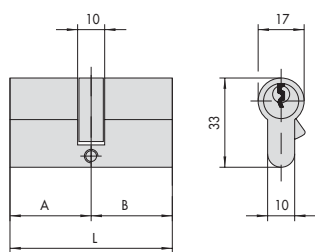
31 / 23	54,0	30,8	23,2	6	1	00450 01 1	0,240	1	1	08857 03 0 12
33 / 27	59,5	32,5	27,0	6	1	00450 01 1	0,240	1	1	08857 05 0 12
31 / 31	61,6	30,8	30,8	6	1	00450 01 1	0,240	1	1	08857 04 0 12
31 / 33	63,3	30,8	32,5	6	1	00450 01 1	0,260	1	1	08857 07 0 12
33 / 31	63,3	32,5	30,8	6	1	00450 01 1	0,260	1	1	08857 06 0 12
33 / 33	65,0	32,5	32,5	6	1	00450 01 1	0,250	1	1	08857 34 0 12
43 / 23	65,7	42,5	23,2	6	1	00450 01 1	0,250	1	1	08857 41 0 12
31 / 36	67,1	30,8	36,3	6	1	00450 01 1	0,270	1	1	08857 09 0 12
36 / 31	67,1	36,3	30,8	6	1	00450 01 1	0,270	1	1	08857 10 0 12
36 / 36	72,6	36,3	36,3	6	1	00450 01 1	0,290	1	1	08857 18 0 12
31 / 43	73,3	30,8	42,5	6	1	00450 01 1	0,300	1	1	08857 11 0 12
43 / 31	73,3	42,5	30,8	6	1	00450 01 1	0,300	1	1	08857 12 0 12
43 / 36	78,8	42,5	36,3	6	1	00450 01 1	0,310	1	1	08857 17 0 12
31 / 50	80,8	30,8	50,0	6	1	00450 01 1	0,315	1	1	08857 26 0 12
46 / 36	82,1	45,8	36,3	6	1	00450 01 1	0,320	1	1	08857 33 0 12
33 / 50	82,5	32,5	50,0	6	1	00450 01 1	0,320	1	1	08857 29 0 12
43 / 43	85,0	42,5	42,5	6	1	00450 01 1	0,330	1	1	08857 25 0 12
31 / 60	90,8	30,8	60,0	6	1	00450 01 1	0,340	1	1	08857 27 0 12
68 / 23	91,2	68,0	23,2	6	1	00450 01 1	0,350	1	1	08857 42 0 12
46 / 46	91,6	45,8	45,8	6	1	00450 01 1	0,350	1	1	08857 38 0 12
60 / 36	96,3	60,0	36,3	6	1	00450 01 1	0,360	1	1	08857 37 0 12
45 / 55	99,0	44,5	54,5	6	1	00450 01 1	0,370	1	1	08857 31 0 12
55 / 45	99,0	54,5	44,5	6	1	00450 01 1	0,370	1	1	08857 35 0 12
60 / 46	105,0	60,0	45,8	6	1	00450 01 1	0,385	1	1	08857 40 0 12
60 / 50	110,0	60,0	50,0	6	1	00450 01 1	0,400	1	1	08857 39 0 12
31 / 80	110,8	30,8	80,0	6	1	00450 01 1	0,410	1	1	08857 13 0 12
55 / 65	119,0	54,5	64,5	6	1	00450 01 1	0,430	1	1	08857 32 0 12
65 / 55	119,0	64,5	54,5	6	1	00450 01 1	0,430	1	1	08857 36 0 12



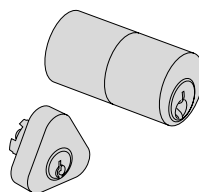
• Double cylinder with adjustable thumb turn shaft
 • Can be combined with internal rose art. 1.06458.20
 • ON REQUEST:
 Knob
 -art. 1.06353.00
 -art. 1.06354.00

31 / 31	61,6	30,8	30,8	6	1	00450 01 1	0,264	1	1	08887 04 0 12
43 / 31	73,3	42,5	30,8	6	1	00450 01 1	0,310	1	1	08887 12 0 12
50 / 31	80,3	49,5	30,8	6	1	00450 01 1	0,339	1	1	08887 51 0 12
60 / 31	90,3	59,5	30,8	6	1	00450 01 1	0,370	1	1	08887 30 0 12
68 / 31	98,8	68,0	30,8	6	1	00450 01 1	0,399	1	1	08887 53 0 12

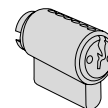
Dimensional drawings



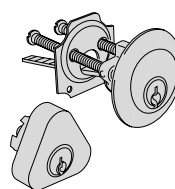
Other available model



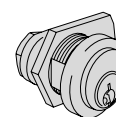
1.02163.00.0.12
1.02176.00.0.12
1.02179.00.0.12
1.02182.00.0.12



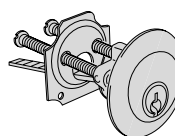
1.02652.01.0



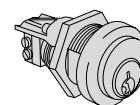
1.02164.00.0.12
1.02172.00.0.12



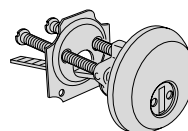
1.72275.26.0.12



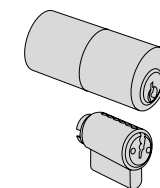
1.02502.00.0.12



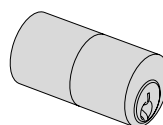
1.72276.01.0.12
1.72276.03.0.12



1.02502.10.0.12



1.02180.00.0.12



1.02572.10.0.12
1.02572.50.0.12
1.02572.60.0.12
1.02572.70.0.12
1.02572.80.0.12
1.02572.90.0.12