

OUTSIDE OPERATION UNITS FOR PANIC DEVICES



MAIN FEATURES

ACCURATE DESIGN

- Accurate design and ergonomics are two of the main features of these outside operation units, to be used with all CISA panic exit devices.
- CISA outside operation units perfectly match all the different shapes of CISA panic exit devices.

VERSATILITY

- CISA outside operation units meet the requirements of the different installation procedures in combination with panic exit devices of New Europa, Sblock and the latest CISA PRESTIGE series.
- The version with reduced handle protrusion, can be used where special applications are required.

FINISHES

- CISA outside operation units are all available in a wide range of colours and PVD satin finish.

OPERATION CONTROL

- Upon request CISA outside operation units can be supplied with a microswitch to control, at any time, their status of operation.



Technical features

- Black painted aluminium casing
- Nickel plated euro prife cylinder

Finishes

- Standard:
 - BLACK casing
- On request
 - RED casing (fin. 41)
 - YELLOW casing (fin. 42)
 - GREEN casing (fin. 43)
 - WHITE casing (fin. 45)
 - GREY casing (fin. 97)

Finish with PVD treatment

- Glazed stainless steel casing (fin.C2)

Hand

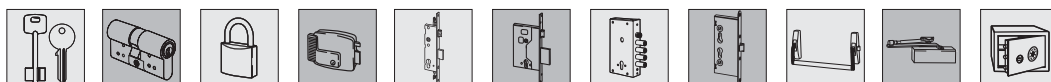
0 = Non-handed

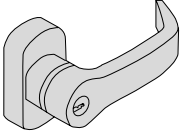

Supplied as standard

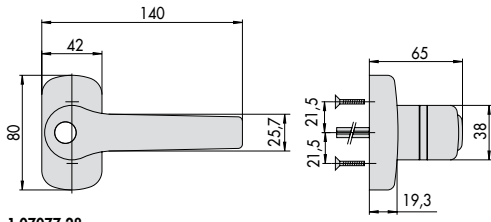
- Keys (where required)
- Fixing screws
- Installation and maintenance instruction sheet
- 7 mm split spindle

On request

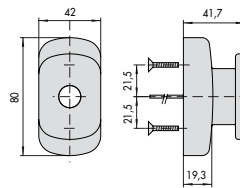
- Version with microswitch (spec. LA)



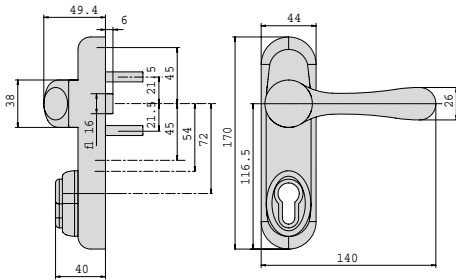
| Type | Description | For item | Unit | | Pcs | | ITEM | | | |
|--|--|--|-------|---|-------------------|----------------------|------|------|------|------|
| | | | Kg | | | | Type | Dim. | Hand | Fin. |
|  <ul style="list-style-type: none"> • Black painted plate with handle • Handle locked by key • Cylinder item 1.02649.10.0 <p>AVAILABLE FINISHES:</p> <ul style="list-style-type: none"> - Red painted (fin. 41) - Yellow painted (fin. 42) - Green painted (fin. 43) - White painted (fin. 45) - Grey painted (fin. 97) | 59000, 59010, 59015, 59800, 59810, 59815 | 0,300 | 1 | 1 | 07077 28 0 | | | | | |
| | <ul style="list-style-type: none"> • Plate with handle with glazed stainless steel PVD coating (fin. C2) • Handle locked by key • Nickel-plated cylinder item 1.02649.10.0.12 | 59000, 59010, 59015, 59800, 59810, 59815 | 0,300 | 1 | 1 | 07077 28 0 C2 | | | | |
|  <ul style="list-style-type: none"> • Black painted plate • Cylinder item 1.02649.11.0 <p>AVAILABLE FINISHES:</p> <ul style="list-style-type: none"> - Red painted (fin. 41) - Yellow painted (fin. 42) - Green painted (fin. 43) - White painted (fin. 45) | 59000, 59800, | 0,300 | 1 | 1 | 07077 29 0 | | | | | |
| | <ul style="list-style-type: none"> • Plate with glazed stainless steel PVD coating (fin. C2) • Nickel-plated cylinder item 1.02649.10.0.12 | 59000, 59800 | 0,300 | 1 | 1 | 07077 29 0 C2 | | | | |



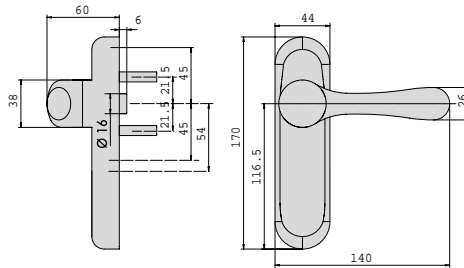
1.07077.28



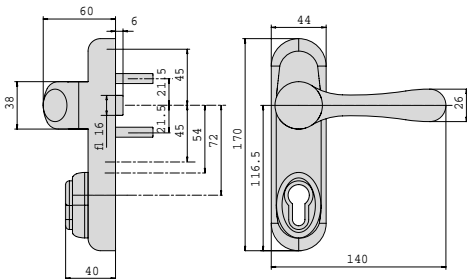
1.07077.29



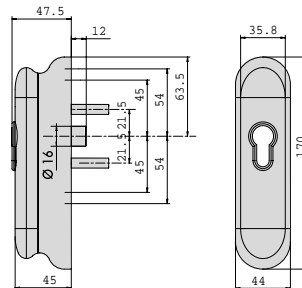
1.07077.46



1.07077.47



1.07077.48



1.07077.49