

DOOR ACCESSORIES

FAENZA*Line*



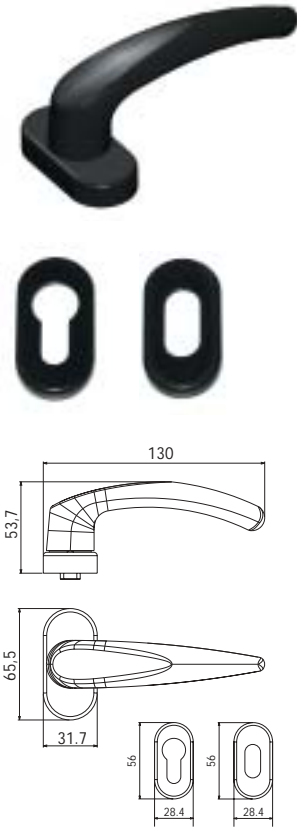
ITEM

Unit W

Pcs

Type Dim. Hand Fin. Pcs. Spec.

"NINFA" door handle



USE

For entrance or passage doors.

STANDARD EQUIPMENT

T3000: 1 pair of handles with roses without strikers, 1 zinc plated spindle 8x135 mm for doors 40 to 60 mm thickness, 4 M5 aluminium inserts, 4 TC CR M5x14 stainless steel screws, 2 PC EI 6x10 stainless steel dowels. 1 pair of handles in a box. T3001: 1 handle with roses without strikers, 1 zinc plated spindle 8x75 mm assembled on the mechanism, 2 M5 aluminium inserts, 2 TC CR M5x14 stainless steel screws, 1 PC EI 6x10 stainless steel dowel. 1 handle per box.

DESCRIPTION

Die-cast aluminium lever, inside body in zamak. pressed aluminium oval protective escutcheons and strikers, zamak fixing element. Steel back-latch spring.

FINISH

RAL painting, plating treatments (see the table at the page bottom).

HAND

Non handed for double handles, right- or left-hand for single handles

Options

Strikers for europrofile cylinder (item T3182), for oval cylinder (art. T3183). N.B. All strikers are delivered and invoiced per single unit.

double 0.555 10 1 T3000 00 0

single 0.325 10 1 T3001 00 1
0.325 10 1 T3001 00 2

Striker for europrofile cylinder 0.033 10 1 T3182 00 0

Striker for oval cylinder 0.025 10 1 T3183 00 0

RAL PAINTING	
BLACK Ral 9005	Fin. 44
WHITE Ral 9010	Fin. 45
CREAMY WHITE Ral 1013	Fin. E1
SILVER Ral 9006	Fin. 97

PLATING TREATMENTS	
NICKEL-PLATED	Fin. 12
POLISHED GOLD	Fin. 15

FLOW LINE - Design by ERIC CHAN - ECCO DESIGN



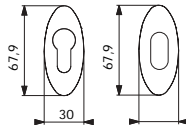
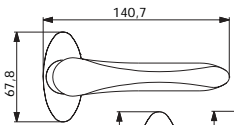
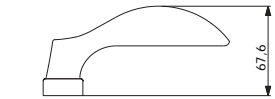
ITEM

Unit W

Pcs

Type Dim. Hand Fin. Pers. Spec.

"FLOW" door handle



USE

For entrance or passage doors.

STANDARD EQUIPMENT

T3002: 1 pair of handles with roses without strikers, 1 zinc plated spindle 8x135 mm for doors 40 to 60 mm thickness, 4 M5 aluminium inserts, 4 TC CR M5x14 stainless steel screws, 2 PC EI 6x10 stainless steel dowels. 1 pair of handles in a box. T3003: 1 handle with roses without strikers, 1 zinc plated spindle 8x75 mm assembled on the mechanism, 2 M5 aluminium inserts, 2 TC CR M5x14 stainless steel screws, 1 PC EI 6x10 stainless steel dowel. 1 handle per box.

DESCRIPTION

Die-cast aluminium lever and body. Oval protective escutcheons, zamak fixing element and strikers. Steel back-latch spring.

FINISH

RAL painting, plating treatments (see the table at the page bottom).

HAND

Non handed for double handles, right- or left-hand for single handles

Options

Strikers for europrofile cylinder (item T3180), for oval cylinder (art. T3181).

N.B. All strikers are delivered and invoiced per single unit.

double	0.440	10	1	T3002 00 0
single	0.220	10	1	T3003 00 1
	0.220	10	1	T3003 00 2

Striker for europrofile cylinder	0.033	10	1	T3180 00 0
Striker for oval cylinder	0.025	10	1	T3181 00 0

RAL PAINTING

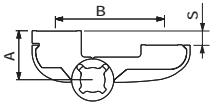
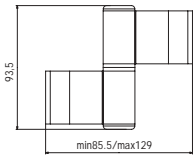
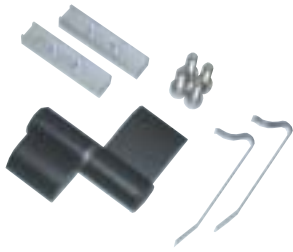
BLACK Ral 9005	Fin. 44
WHITE Ral 9010	Fin. 45
CREAMY WHITE Ral 1013	Fin. E1
SILVER Ral 9006	Fin. 97

PLATING TREATMENTS

NICKEL-PLATED	Fin. 12
POLISHED GOLD	Fin. 15

DOOR HINGES - FAENZA**Line**

"FORZA" 2-wing hinge for doors up to 120 kg weight



USE
Hinge for flush-mounted doors.

STANDARD EQUIPMENT
2 hinge plugs, 4 TC E1 M8x25 stainless steel screws, 2 PCP E1 M5x10 stainless steel dowels, 1 shim washer, 2 adjustable bushes, 1 hinge pin, 2 fixing plates, 2 fixing plate springs, 2 female screw-cover plates.

DESCRIPTION
Extruded aluminium male and female hinges, screw-cover plates and striking plates. Stainless steel pin. Plastic eccentric bushes, plugs and shim washer. Stainless steel PC E1 M5x10 screw-cover plate securing dowel.

FINISH
RAL painting, anodizing, plating treatments (see the table at the page bottom).

HAND
Non-handed.

S	A	B	Unit W Kg	Pcs	ITEM			
					Type	Dim.	Hand	Fin. Pers. Spec.
-	20	55.5	0.080	12	1	T3110	00	0
-	20	60.5	0.080	12	1	T3111	00	0
-	20	69	0.080	12	1	T3112	00	0
-	20	83	0.080	12	1	T3113	00	0
-	20	91.5	0.080	12	1	T3114	00	0
7	27	55.5	0.080	12	1	T3115	00	0
8	28	55.5	0.080	12	1	T3116	00	0

RAL PAINTING

BLACK Ral 9005	Fin. 44
WHITE Ral 9010	Fin. 45
CREAMY WHITE Ral 1013	Fin. E1
SILVER Ral 9006	Fin. 97

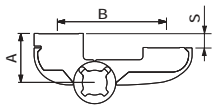
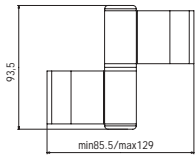
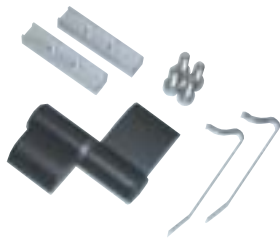
ANODIZING

SILVER	Fin. E2
BRONZE	Fin. E4
BLACK	Fin. E6
BROWN	Fin. E7

DOOR HINGES - FAENZA*Line*

S	A	B	Unit W 	Pcs 	ITEM				
					Type	Dim.	Hand	Fin.	Pers.

“FORZA” 2-wing hinge with small plate for doors up to 120 kg weight



USE
Hinge for flush-mounted doors.

STANDARD EQUIPMENT
2 hinge plugs, 4 TC EI M8x25 stainless steel screws, 2 PCP EI M5x10 stainless steel dowels, 1 shim washer, 2 adjustable bushes, 1 hinge pin, 2 fixing plates, 2 fixing plate springs, 2 female screw-cover plates.

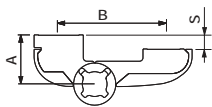
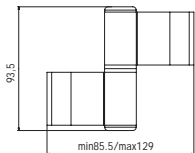
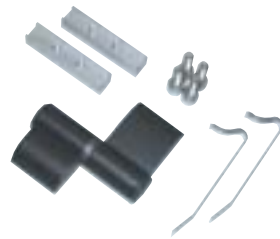
DESCRIPTION
Extruded aluminium male and female hinges, screw-cover plates and striking plates. Stainless steel pin. Plastic eccentric bushes, plugs and shim washer. Stainless steel PC EI M5x10 screw-cover plate securing dowel.

FINISH
RAL painting, anodizing, plating treatments (see the table at the page bottom).

HAND
Non-handed.

-	20	55.5	0.150	12	1	T3130 00 0
-	27	55.5	0.150	12	1	T3131 00 0

“FORZA” 2-wing hinge with off-centred plate for doors up to 120 kg weight



USE
Hinge for flush-mounted doors.

STANDARD EQUIPMENT
2 hinge plugs, 4 TC EI M8x25 stainless steel screws, 2 PCP EI M5x10 stainless steel dowels, 1 shim washer, 2 adjustable bushes, 1 hinge pin, 2 fixing plates, 2 fixing plate springs, 2 female screw-cover plates.

DESCRIPTION
Extruded aluminium male and female hinges, screw-cover plates and striking plates. Stainless steel pin. Plastic eccentric bushes, plugs and shim washer. Stainless steel PC EI M5x10 screw-cover plate securing dowel.

FINISH
RAL painting, anodizing, plating treatments (see the table at the page bottom).

HAND
Non-handed.

-	20	55.5	0.150	12	1	T3140 00 0
-	20	39	0.150	12	1	T3141 00 0
-	20	91.5	0.150	12	1	T3142 00 0
7	27	55.5	0.150	12	1	T3143 00 0
8	28	55.5	0.150	12	1	T3144 00 0

RAL PAINTING

BLACK Ral 9005	Fin. 44
WHITE Ral 9010	Fin. 45
CREAMY WHITE Ral 1013	Fin. E1
SILVER Ral 9006	Fin. 97

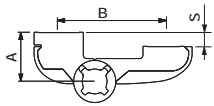
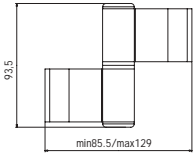
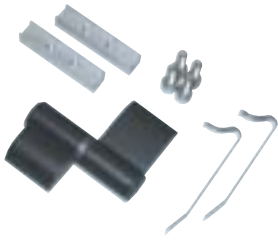
ANODIZING

SILVER	Fin. E2
BRONZE	Fin. E4
BLACK	Fin. E6
BROWN	Fin. E7

DOOR HINGES - FAENZA*Line*

S	A	B	Unit W 	Pcs 	ITEM				
					Type	Dim.	Hand	Fin.	Pers.

"FORZA" 2-wing hinge for doors up to 120 kg weight



USE
Hinge for flush-mounted and overlapping doors with 7 and 8 mm steps.

STANDARD EQUIPMENT
2 hinge plugs, 4 TC EI M8x25 stainless steel screws, 1 male hinge, 2 PCP EI M5x10 stainless steel dowels, 1 shim washer, 1 male screw-cover plate, 2 adjustable bushes, 1 hinge pin, 2 fixing plates, 2 fixing plate springs, 1 female screw-cover plate.

DESCRIPTION
Extruded aluminium male and female hinges, screw-cover plates and striking plates. Stainless steel pin. Plastic eccentric bushes, plugs and shim washer. Stainless steel PC EI M5x10 screw-cover plate securing dowel.

FINISH
RAL painting, anodizing, plating treatments (see the table at the page bottom).

HAND
Non-handed.

7	27	60.5	0.150	12	1	T3150 00 0				
8	28	60.5	0.150	12	1	T3151 00 0				

RAL PAINTING

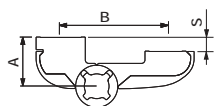
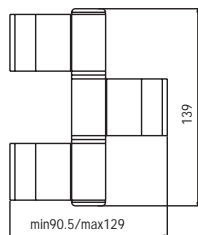
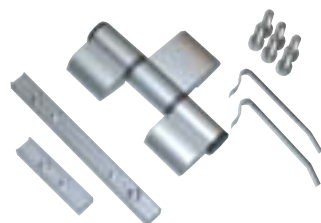
BLACK Ral 9005	Fin. 44
WHITE Ral 9010	Fin. 45
CREAMY WHITE Ral 1013	Fin. E1
SILVER Ral 9006	Fin. 97

ANODIZING

SILVER	Fin. E2
BRONZE	Fin. E4
BLACK	Fin. E6
BROWN	Fin. E7

DOOR HINGES - FAENZA*Line*

“FORZA” 3-wing hinge for doors up to 130 kg weight



USE

Hinge for flush-mounted doors.

STANDARD EQUIPMENT

2 hinge plugs, 6 TC EI M8x25 stainless steel screws, 2 male hinges, 3 PCP EI M5x10 stainless steel dowels, 2 shim washers, 2 male screw-cover plates, 2 adjustable bushes, 1 hinge pin, 2 fixing plates 2 wings, 2 fixing plate springs, 1 female screw-cover plate, 1 female hinge, 1 fixing plate 3 wings, 1 bush for 3-wing hinge.

DESCRIPTION

Extruded aluminium male and female hinges, screw-cover plates and striking plates. Stainless steel pin. Plastic eccentric bushes, plugs and shim washer. Stainless steel PC EI M5x10 screw-cover plate securing dowel.

FINISH

RAL painting, anodizing, plating treatments (see the table at the page bottom).

HAND

Non-handed.

S A B



Unit W



Pcs

ITEM

Type Dim. Hand Fin. Pers. Spec.

-	20	60.5	0.150	8	1	T3160 00 0
-	20	69	0.150	8	1	T3161 00 0
-	20	83	0.150	8	1	T3162 00 0
-	20	91.5	0.150	8	1	T3163 00 0

RAL PAINTING

BLACK Ral 9005	Fin. 44
WHITE Ral 9010	Fin. 45
CREAMY WHITE Ral 1013	Fin. E1
SILVER Ral 9006	Fin. 97

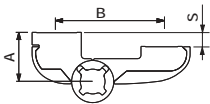
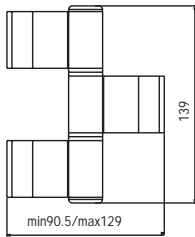
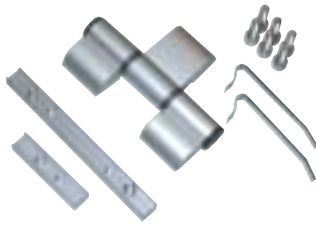
ANODIZING

SILVER	Fin. E2
BRONZE	Fin. E4
BLACK	Fin. E6
BROWN	Fin. E7

DOOR HINGES - FAENZA**Line**

S	A	B	Unit W	Pcs	ITEM			
					Type	Dim.	Hand	Fin. Pers. Spec.

"FORZA" 3-wing hinge with off-centred plate for doors up to 130 kg weight



USE
Hinge for flush-mounted doors.

STANDARD EQUIPMENT
2 hinge plugs, 6 TC EI M8x25 stainless steel screws, 2 male hinges, 3 PCP EI M5x10 stainless steel dowels, 2 shim washers, 2 male screw-cover plates, 2 adjustable bushes, 1 hinge pin, 1 fixing plate 2 wings, 2 fixing plate springs, 1 female screw-cover plate, 1 female hinge, 1 3 wings fixing plate, 1 bush for 3-wing hinge.

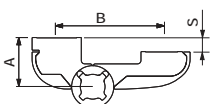
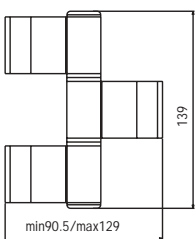
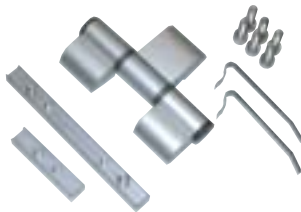
DESCRIPTION
Extruded aluminium male and female hinges, screw-cover plates and striking plates. Stainless steel pin. Plastic eccentric bushes, plugs and shim washer. Stainless steel PC EI M5x10 screw-cover plate securing dowel.

FINISH
RAL painting, anodizing, plating treatments (see the table at the page bottom).

HAND
Non-handed.

- 20 91.5 0.150 8 1 T3170 00 0

"FORZA" 3-wing hinge for doors up to 130 kg weight



USE
Hinge for flush-mounted doors.

STANDARD EQUIPMENT
2 hinge plugs, 6 TC EI M8x25 stainless steel screws, 2 male hinges, 3 PCP EI M5x10 stainless steel dowels, 2 shim washers, 2 male screw-cover plates, 2 adjustable bushes, 1 hinge pin, 1 2-wing fixing plate, 2 fixing plate springs, 1 female screw-cover plate, 1 female hinge, 1 3-wing fixing plate, 1 bush for 3-wing hinge.

DESCRIPTION
Extruded aluminium male and female hinges, screw-cover plates and striking plates. Stainless steel pin. Plastic eccentric bushes, plugs and shim washer. Stainless steel PC EI M5x10 screw-cover plate securing dowel.

FINISH
RAL painting, anodizing, plating treatments (see the table at the page bottom).

HAND
Non-handed.

7 27 60.5 0.150 8 1 T3175 00 0
8 28 60.5 0.150 8 1 T3176 00 0

RAL PAINTING

BLACK Ral 9005	Fin. 44
WHITE Ral 9010	Fin. 45
CREAMY WHITE Ral 1013	Fin. E1
SILVER Ral 9006	Fin. 97

ANODIZING

SILVER	Fin. E2
BRONZE	Fin. E4
BLACK	Fin. E6
BROWN	Fin. E7

DOOR HINGES - FAENZA*Line*



ITEM

Type Dim. Hand Fin. Pcs. Spec.

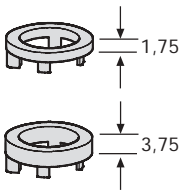
Spacers for "FORZA" hinges



USE
For thermal cut profiles.
STANDARD EQUIPMENT
1 spacer, 1 M8x40/50/60 screw. 24 spacers, 24 screws per packing. 10 packings in a box.
DESCRIPTION
Zinc plated AVP.
FINISH
Unfinished.

A=17.5	0.150	100	1	T3184 00 0
A=27.5	0.150	100	1	T3185 00 0
A=37.5	0.150	100	1	T3186 00 0

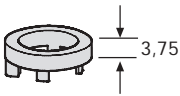
Vertical adjustment kit for 3-wing "FORZA" hinges



USE
To adjust hinge height.
STANDARD EQUIPMENT
100 spacers 3.75 mm, 100 spacers 1.75 mm. 100 pieces in a box.
DESCRIPTION
Nylon.
FINISH
Black nylon.

0.003	100	1	T318700 0
-------	-----	---	-----------

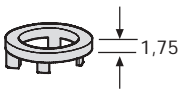
Vertical adjustment shim washer for 2-wing "FORZA" hinges



USE
To adjust hinge height.
STANDARD EQUIPMENT
100 pieces in a box.
DESCRIPTION
Nylon.
FINISH
Black nylon.

0.002	100	1	T3188 00 0
-------	-----	---	------------

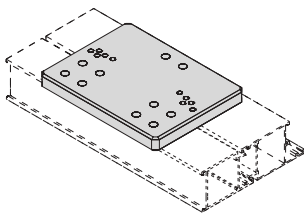
Vertical adjustment shim washer for 2-wing "FORZA" hinges



USE
To adjust hinge height.
STANDARD EQUIPMENT
100 pieces in a box.
DESCRIPTION
Nylon.
FINISH
Black nylon.

0.002	100	1	T3189 00 0
-------	-----	---	------------

Hinge installation jig



USE
To carry out hinge installation drill.
STANDARD EQUIPMENT
1 jig packed in individual plastic bag. 20 bags in a box.
DESCRIPTION
Steel.
FINISH
Unfinished.

Distance 55.5	1.363	20	1	T3190 00 0
Distance 61.5-83	1.363	20	1	T3191 00 0
Distance 31.5-69	1.363	20	1	T3192 00 0